

One Stop Shop for All Your Business Development Needs

Contact Us:



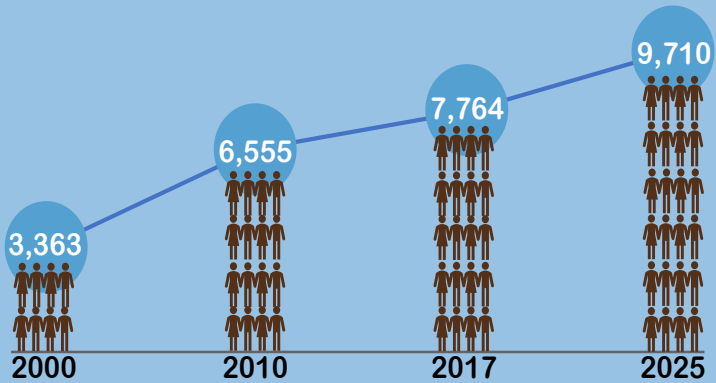
Sarah Burdette,
Clerk/Administrator
920.336.3360
sburdette@ledgeviewwisconsin.com

Ledgeviewwisconsin.com

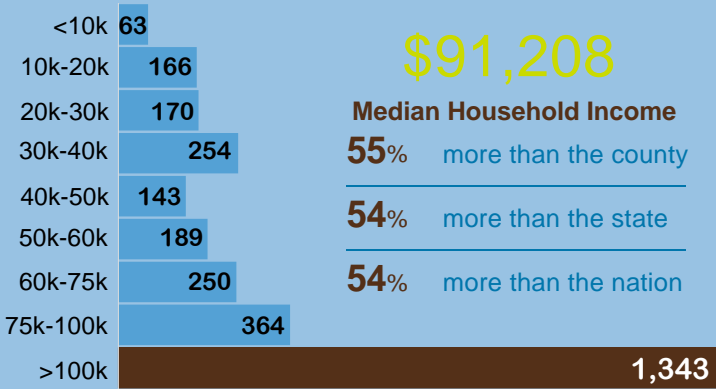
Ledgeview Economic Snapshot

Ledgeview has very favorable economic conditions for starting or growing a business. Couple this with the ease of doing business in Ledgeview and there is no doubt you'll want to Grow With Us.

POPULATION GROWTH



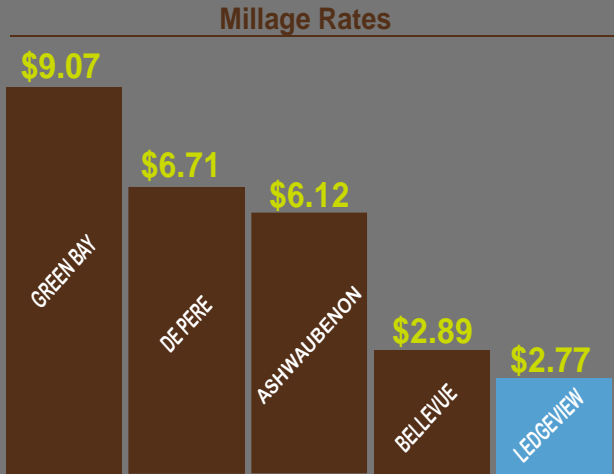
HIGH INCOMES



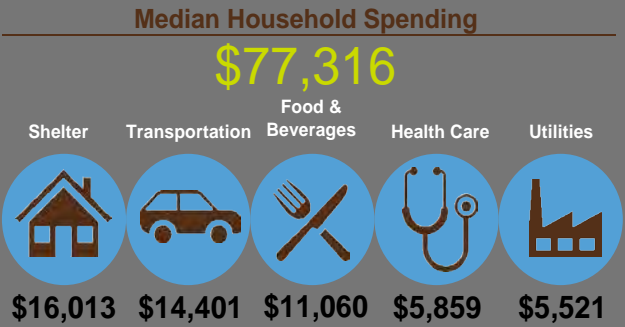
\$91,208

Median Household Income
55% more than the county
54% more than the state
54% more than the nation

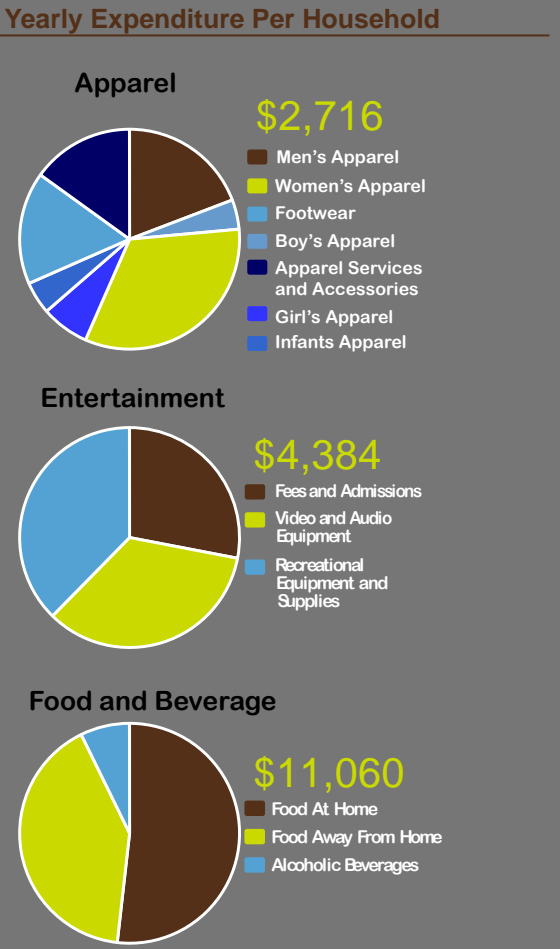
PROPERTY TAXES



SPENDING



MARKET EXPENDITURES



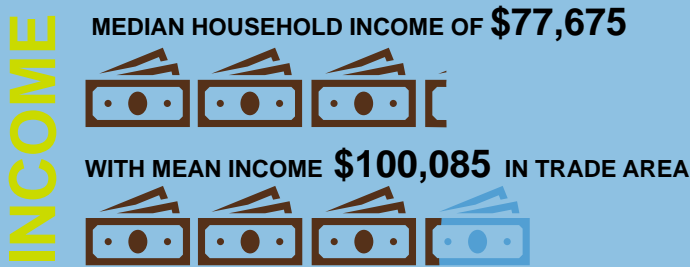
Grow with us

Ledgeviewwisconsin.com

One of the Fastest Growing & Highest Income Communities in the Green Bay Market

Trade Area Statistics

The Neighborhood Center District serves a market including Ledgeview, De Pere, and towns to the south. It has amazing potential to draw from a much broader area to its unique shoppes and restaurants.



The emerging regional business area includes several large retail businesses, such as Costco and Target. It also includes a WisDOT park and ride drawing many regional users. The planned extension of CTH GV (Monroe Rd) to the south, and associated bridge crossing will make Ledgeview Neighborhood Center District a prime location.

Targeted Opportunities:

- Specialty Food Stores
- Wine, beer, and spirit stores
- Luxury home furnishing stores
- Boutique clothing and accessory shoppes
- Jewelry shoppes
- Craft, novelty, and souvenir stores
- Banking and small office
- Personal Services
- Fitness and healthcare services



Walkable Mixed-Use “Neighborhood Setting”



Located in a Tax Incremental Financing District

Sites are ready for development. Ask about Ledgeview’s TIF grants, other economic development tools, and how we can help you Grow With Us.